

WARNINGS

All installations should be in accordance with the building regulations and the local authority. The equipment should be installed by a certified electrician. Be sure to keep all electrical wiring clear of any moving parts. Inspect all shipments carefully for damage. The receiver must note any damage on the carrier's proof of delivery and file a claim immediately with the freight company. Disconnect power before installing or servicing the equipment.



NOTE

Smartref Technologies are designed to meet the latest requirement and are listed in full compliance with UL 507 and CSA 22.2 no.113. For Indoor use only

WARNINGS

FOR YOUR SAFETY, READ AND UNDERSTAND INSTRUCTIONS COMPLETELY BEFORE STARTING INSTALLATION. BEFORE CONNECTING TO THE POWER SUPPLY, TURN OFF ELECTRICITY AT THE FUSE OR CIRCUIT BREAKER BOX

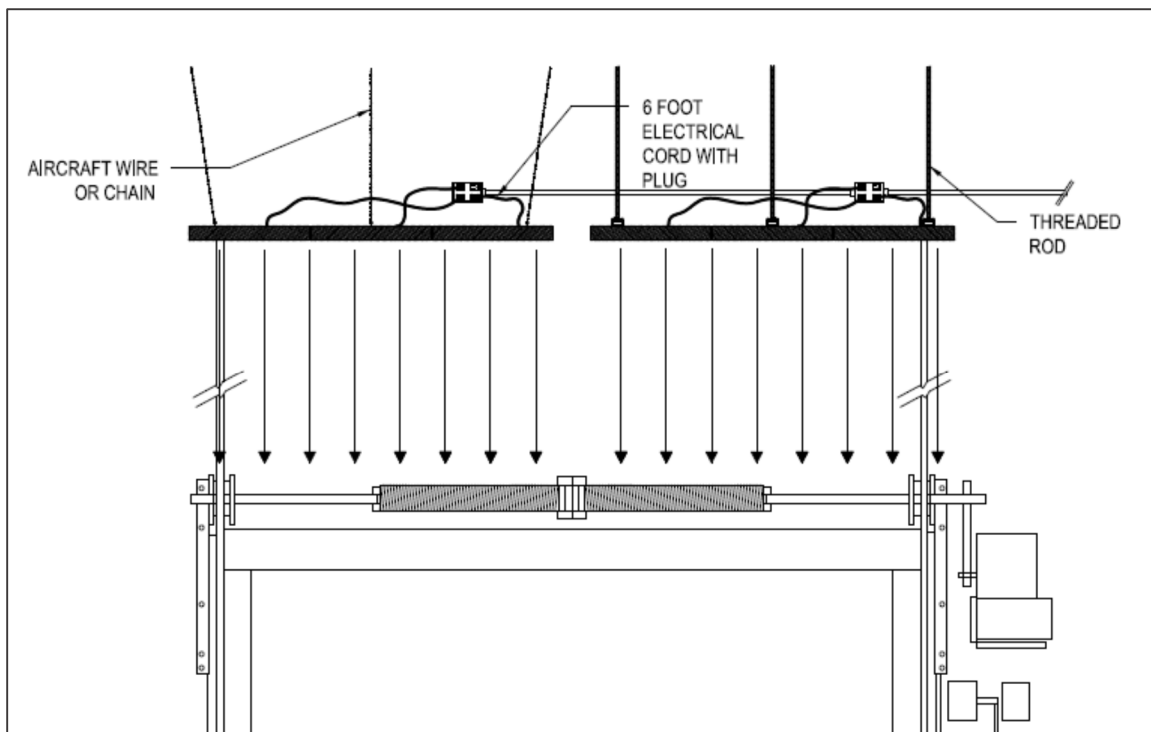
Techonologies Smartref Inc. 1341 rue principale, St-Zotique (Québec) J0P 1Z0
(514) 267-3773

For additional information please visit www.smartref.com

HEAT WALL INSTALLATION GENERAL NOTES

The Smartref heat wall technologies are modular self-contained units incorporating 6 foot electrical cord with a three-way plug per section. They are designed to treat the exterior air and reduce the infiltration in or exfiltration out the building

- Installation should be done to ensure that the equipment is parallel to the floor and the product should be handled with care to ensure that the air is directed at the desired area.
- Equipment should be located in above the opening in the higher part of the building
- To maximise the benefits locate the equipment close to a heat generating source.



INSTALLATION FOR AN EXTERIOR DOOR OR OPENING

- Equipment should be located at a minimum of 1' above the opening.
- To maximise the benefits locate the equipment close to a heat generating source.
- The equipment should be suspended using chains or wires, one on each corner.
- Installer must provide suitable steel wire or chain to hang the equipment.

ELECTRICAL CONNECTION INSTRUCTION

- Improper grounding can result in a risk of electrical shock.
- Position the outlet offset so that the power cord will be correctly connected to the outlet.
- Place the outlet at a maximum of 3' from the equipment

